

# MagLab Organization



**MagLab Director and Principal Investigator**  
Greg Boebinger  
**Deputy Lab Director**  
Eric Palm  
**Chief Scientist**  
Laura Greene

## MAGLAB USER PROGRAM

**DC Magnetic Field Facility**  
Tim Murphy, Director

**Pulsed Magnetic Field Facility**  
Michael Rabin, Program Director  
Ross McDonald, Deputy Director

**High B/T Facility**  
Neil Sullivan, Director

**Electron Magnetic Resonance Facility**  
Steve Hill, Director  
Jurek Krzystek, Deputy Director

**Nuclear Magnetic Resonance/  
Magnetic Resonance Imaging  
at Florida State University**  
Tim Cross, Director  
Bill Brey, Deputy Director

**Nuclear Magnetic Resonance/  
Magnetic Resonance Imaging  
at University of Florida**  
Joanna Long, Director  
Tom Mareci, Deputy Director

**Ion Cyclotron Resonance Facility**  
Chris Hendrickson, Director

## ASSOCIATE LAB DIRECTORS

**Scientific Instrumentation & Operations Division**  
Scott Hannahs, Associate Lab Director

**Magnet Science & Technology Division**  
Mark Bird, Associate Lab Director

**Applied Superconductivity Center**  
Lance Cooley, Associate Lab Director

**MagLab/Los Alamos Nat'l Lab Branch**  
Michael Rabin, Associate Lab Director

**MagLab/University of Florida Branch**  
Joanna Long, Associate Lab Director

## CHIEF SCIENTISTS

**Chief Scientist for Chemistry/Biology**  
Lucio Frydman

**Chief Materials Scientist**  
David Larbalestier

**Chief Scientist for Ion Cyclotron Resonance**  
Alan Marshall

## OFFICE OF THE DIRECTOR

**Business Administration**  
Debra Booth

**Center for Integrating Research and Learning**  
Roxanne Hughes

**Computer Support Group**  
Peter Jensen

**Diversity Program**  
Roxanne Hughes

**Employee Health & Safety**  
Laymon Gray

**Human Resources Department**  
Bettina Roberson

**In house Research Groups**  
Laura Greene, Wei Guo, Vincent Salters

**Project Management**  
Dave Lunger

**Public Affairs and Government Relations**  
Kristin Roberts

**User Collaboration Grants Program**  
Lloyd Engel

**Web Application Group/ Printing Services**  
Eric Clark

# MagLab User Program

**MagLab Director and  
Principal Investigator**  
Greg Boebinger  
**Deputy Lab Director**  
Eric Palm  
**Chief Scientist**  
Laura Greene

**MagLab User Program**  
Anke Toth, Chief of Staff

**DC Magnetic  
Field Facility**  
Tim Murphy,  
Director

**User Scheduling**  
Tim Murphy

**Millikelvin Lab**  
Hongwoo Baek

**Magnetization**  
Eun Sang Choi

**Pressure**  
Stan Tozer

**Optics**  
Steve McGill

**Cond Matter NMR**  
Arneil Reyes

**Magnet Control  
Room Operations**  
Bryon Dalton

**Hybrid & Cryogenic  
Operations**  
Mark Vanderlaan

**Pulsed Magnetic  
Field Facility**  
Michael Rabin,  
Program Director  
Ross McDonald,  
Deputy Director

**User Scheduling**  
Jon Betts

**Operations**  
Jon Betts

**Generator  
Operations**  
Yates Coulter

**MS&T**  
Doan Nguyen

**High B/T Facility**  
Neil Sullivan  
Director

**User Scheduling**  
Neil Sullivan

**Facility Manager**  
Jian-Sheng Xia

**Low Temperature  
Magnetization**  
Chao Huan

**Safety Officer,  
Building  
Infrastructure**  
Naoto Masuhara

**Electron Magnetic  
Resonance  
Facility**  
Steve Hill, Director  
Jurek Krzystek,  
Deputy Director

**User Scheduling**  
Jurek Krzystek

**Keck Powered Magnet**  
Jurek Krzystek

**W-Band EMR**  
Likai Song

**Multifrequency EMR**  
Andrew Ozarowski

**High Field Pulsed EMR**  
Hans van Tol

**Nuclear Magnetic  
Resonance/Magnetic  
Resonance Imaging  
at FSU**  
Tim Cross, Director  
Bill Brey, Deputy Director

**User Scheduling**  
Ashley Blue

**Solid State and  
Solution NMR**  
Zhehong Gan

**Magnetic Resonance  
Imaging**  
Sam Grant

**NMR/MRI Probes**  
Bill Brey  
Peter Gor'kov

**Nuclear Magnetic  
Resonance/Magnetic  
Resonance Imaging  
at UF**  
Joanna Long, Director  
Tom Mareci,  
Deputy Director

**Nuclear Magnetic  
Resonance**  
James Rocca

**MRI Microscopy  
& Vertical Magnet User  
Scheduling**  
James Collins

**In vivo Magnetic  
Resonance Imaging  
& Horizontal Magnet  
User Scheduling**  
Huadong Zeng

**RF Program**  
Malathy Elumalai

**Ion Cyclotron  
Resonance**  
Chris Hendrickson,  
Director

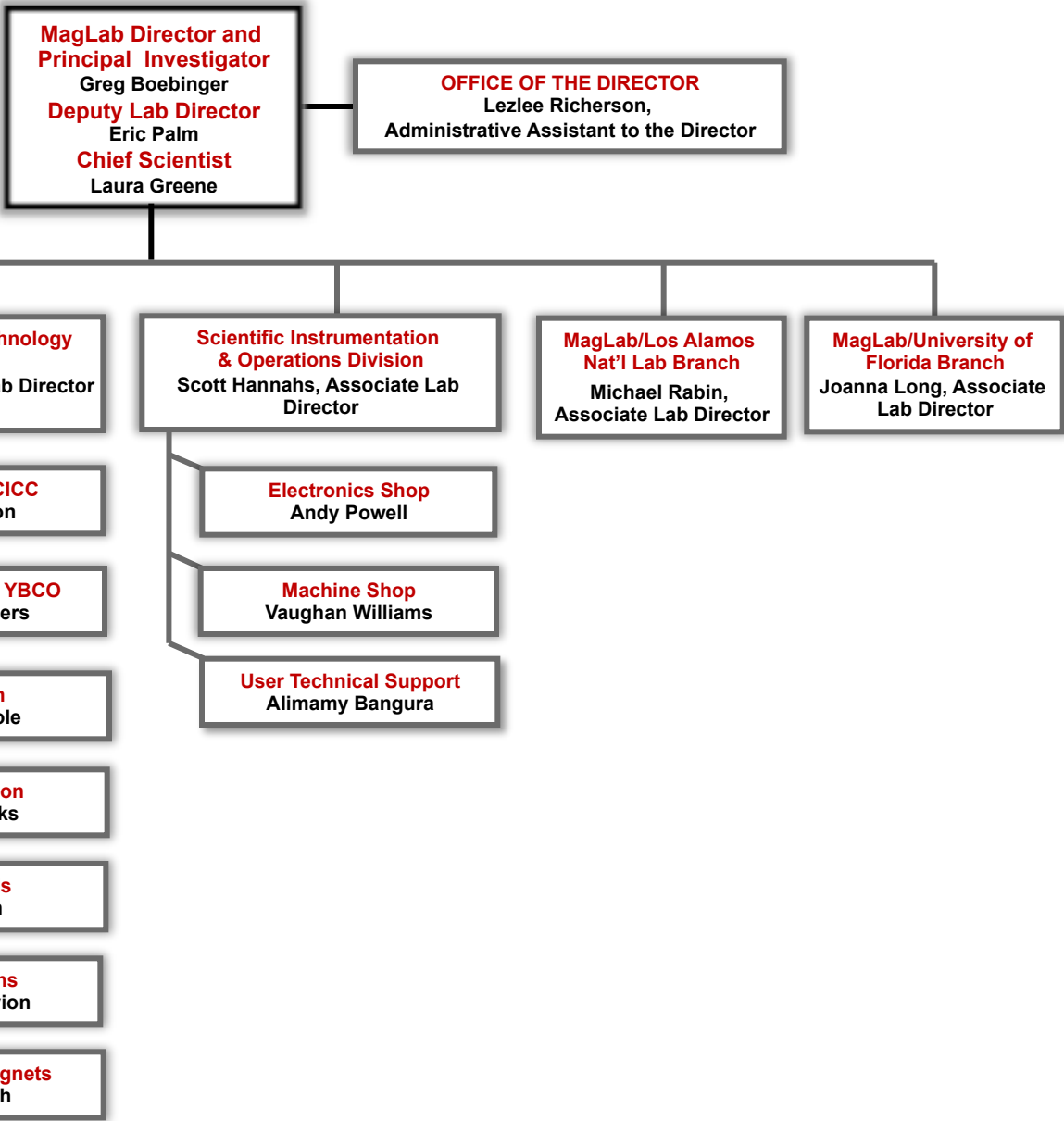
**User Scheduling**  
Amy McKenna

**Instrumentation**  
Chris Hendrickson

**Biology Applications**  
Lissa Anderson

**Environmental &  
Petrochemical  
Applications**  
Ryan Rodgers

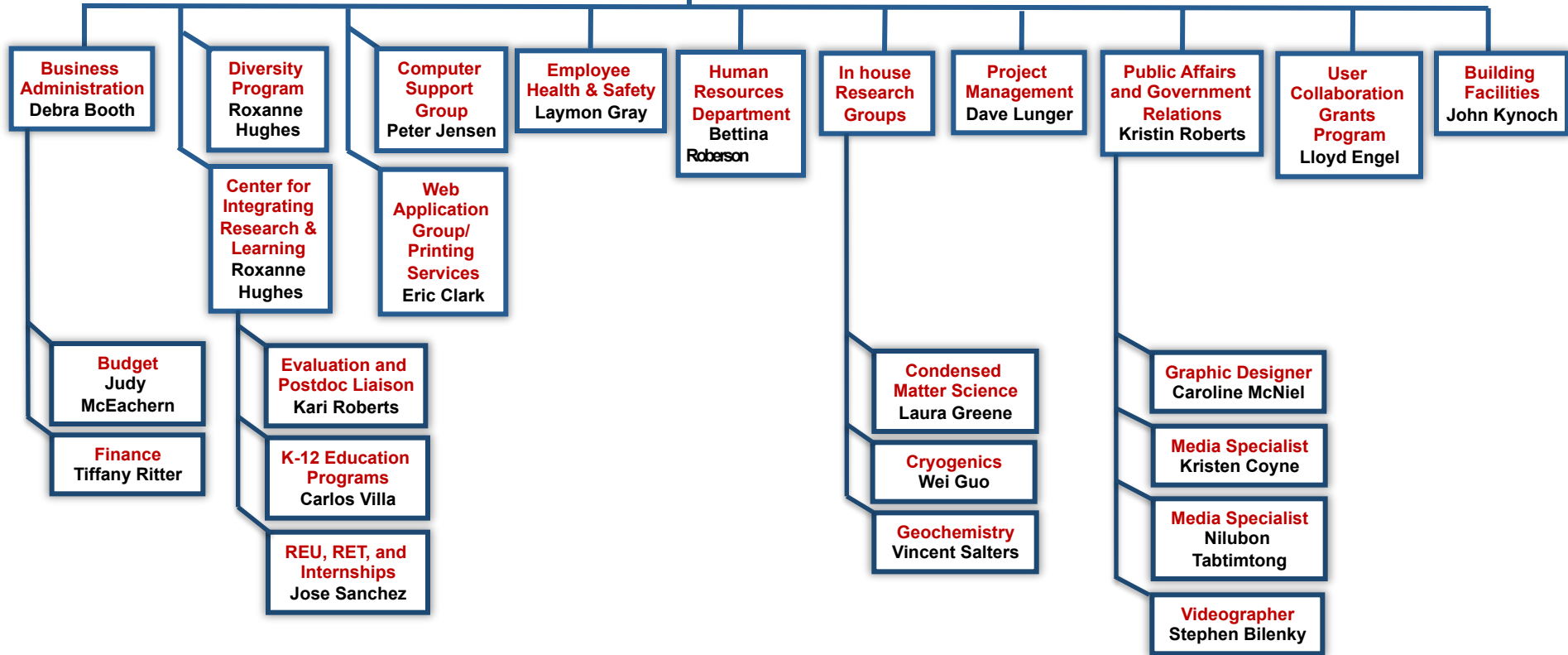
# MagLab Associate Lab Directors



# MagLab Office of the Director

**MagLab Director and  
Principal Investigator**  
Greg Boebinger  
**Deputy Lab Director**  
Eric Palm  
**Chief Scientist**  
Laura Greene

**OFFICE OF THE DIRECTOR**  
Lezlee Richerson,  
Administrative Assistant to the Director  
Christy Wackes,  
Administrative Assistant to the  
Deputy Lab Director and Chief Scientist



# MagLab Advisory Committees

## USERS COMMITTEE

Madalina Furis, Chair  
 Sara Haravifard, Vice Chair, General Field  
 Stefan Stoll, Vice Chair, Resonance  
**User Sub-Committees**  
 DC Magnet and High B/T Users Sub-Cmte  
 Pulsed Magnet Users Sub-Cmte  
 NMR/MRIs Users Sub-Cmte  
 Ion Cyclotron Resonance Users Sub-Cmte  
 Electron Magnetic Resonance Users Sub-Cmte

## INSTITUTIONAL OVERSIGHT COMMITTEE

John Thrasher, President, FSU, Chair  
 Kent Fuchs, President, UF  
 Thom Mason, Director, LANL

### Institutional Representatives

Gary Ostrander, FSU VP for Research  
 David Norton, UF VP for Research  
 John Sarrao, LANL Principal Associate  
 Director for Science, Technology and  
 Engineering

## EXTERNAL ADVISORY COMMITTEE

Meigan Aronson, Chair  
 Madalina Furis, Chair Users Cmte. *ex officio*

Christoph Boehme	Robert Griffin	Stanley Opella
R. David Britt	Songi Han	Jeff Parrell
Stuart Brown	Barbara Jones	Art Ramirez
Luca Bottura	Stephen Julian	Mansour Shayegan
Moses Chan	Philip Kim	Dean Sherry
Wei Chen	Junichiro Kono	Bruce Strauss
Jack Freed	Peter Littlewood	Alan Tennant
Jean Futrell	Carol Nilsson	Nai-Chang Yeh
Gillian Goward		

## EXECUTIVE COMMITTEE

Lab Director, Chair  
*Monthly Meeting of Dir., Deputy Lab Dir., Associate Lab Dir., Assistant Lab Dir., User Facility Dir., Chief Scientists and Science Council co-Chairs, Diversity Program Dir., Dir. of Center for Integrating Research and Learning, MagLab EH&S Dir.*

Lucio Frydman, **Chief Scientist for Chem/Bio**  
 David Larbalestier, **Chief Materials Scientist**  
 Alan Marshall, **Chief Scientist for ICR**

## SCIENCE COUNCIL

Vivien Zapf and Theo Siegrist  
 Condensed Matter co-Chairs  
 Gail Fanucci, Chem/Biology co-Chair

## DIVERSITY COMMITTEE

*Bi-Monthly Meeting:* CIRL Director (Chair), Director, Representatives from MagLab Departments

## SAFETY COMMITTEE

*Monthly Meeting:* MagLab EH&S Director (Chair), EH&S Staff, Director, Representatives from MagLab Departments

## MagLab Director and PI

Greg Boebinger

## Deputy Lab Director

Eric Palm

## Chief Scientist

Laura Greene

## EXTERNAL ADVISORY SUB-COMMITTEES

### Education and Outreach Sub-Committee

Chantel Balesdent	Mary Jo Koroly	Daniel Steinberg
Jamie Bell	Dale McCreedy	Janelle Vigil-
Lora Hine	Christine Morrow	Maestas

### Diversity and Inclusion Sub-Committee

C.J. Bacino	Simon Capstick	Michelle Douglas
Susan Blessing	Donna Dean	Nancy Marcus
Alberto Camargo	Ted Hodapp	Karen Molek
Charmane Caldwell	Keisha John	Bob Parks

MAGLAB USER PROGRAM

ASSOCIATE LAB DIRECTORS

OFFICE OF THE DIRECTOR

## MANAGEMENT COMMITTEE

Lab Director, Chair  
*Weekly Meeting of Dir., Deputy Lab Dir., Associate Lab Dir., Dir. of Center for Integrating Research & Learning, Dir. of Project Management, Dir. of Public Affairs, Assistant Dir. for Business Administration, MagLab EH&S Dir.*

GREEN = External Advisory Committees

GOLD = Internal Advisory Committees

Updated: September 18, 2018