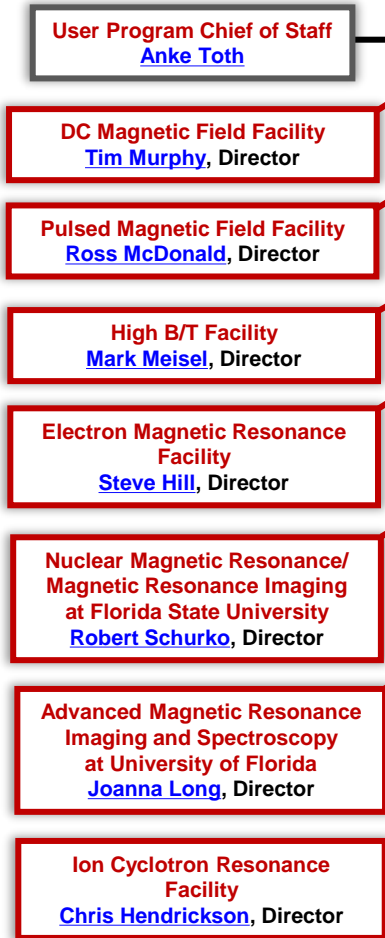
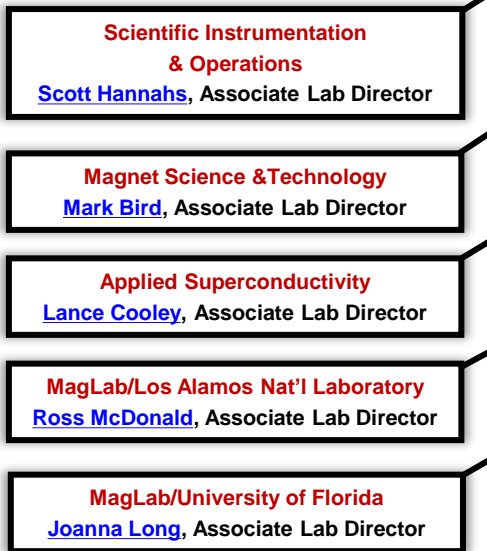


MagLab Organization

MAGLAB USER PROGRAM



ASSOCIATE LAB DIRECTORS



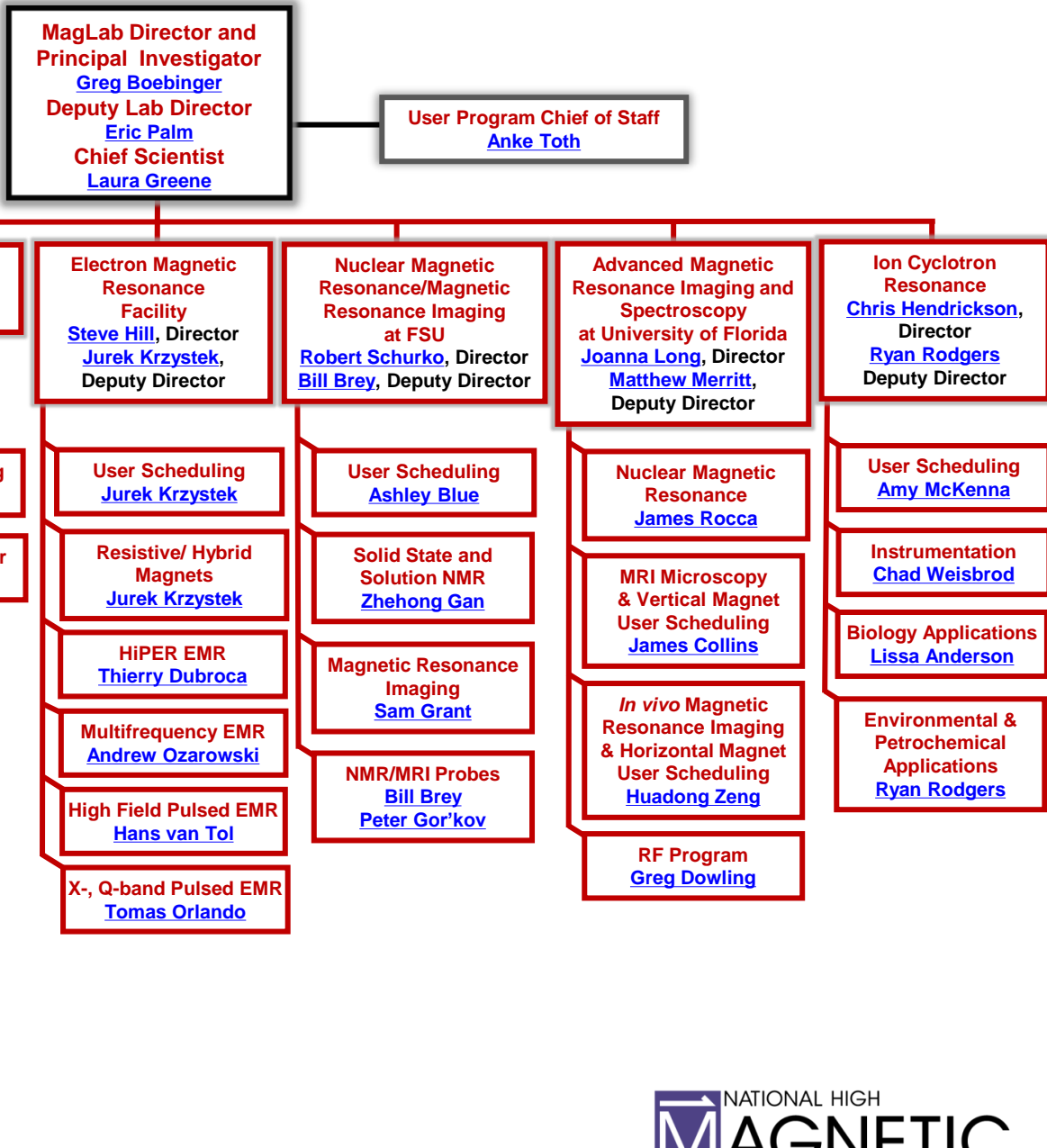
CHIEF SCIENTISTS



OFFICE OF THE DIRECTOR



MagLab User Program



MagLab Associate Lab Directors

**MagLab Director and
Principal Investigator**
[Greg Boebinger](#)
Deputy Lab Director
[Eric Palm](#)
Chief Scientist
[Laura Greene](#)

Chief of Strategic Initiatives
[Kristin Roberts](#)
MagLab Chief of Staff
[Lezlee Richerson](#)

Applied Superconductivity Center
[Lance Cooley](#)
 Associate Lab Director

Principal Investigators
[Dmytro Abraimov](#),
[Najib Cheggour](#),
[Seungyong Hahn](#), [Eric Hellstrom](#)
[Jan Jaroszynski](#), [Jianyi Jiang](#),
[Fumitake Kametani](#),
[Peter Lee](#), [Chiara Tarantini](#)
[Ulf Trociewitz](#)

ASC Magnets
[Van Griffin](#)

Facilities
[Bill Starch](#)

**Magnet Science & Technology
Division**

[Mark Bird](#)
 Associate Lab Director

[Tom Painter](#)
 Interim MS&T Director

40 T SC Magnet
[Hongyu Bai](#)

Analysis, CICC
[Iain Dixon](#)

Resistive Magnets
[Jack Toth](#)

Materials
[Ke Han](#) / [Jun Lu](#)

Design
[Todd Atkins](#)

Fabrication
[Lee Marks](#)

**Scientific Instrumentation
& Operations Division**
[Scott Hannahs](#)
 Associate Lab Director

Machine Shop
[Andy Rubes](#)

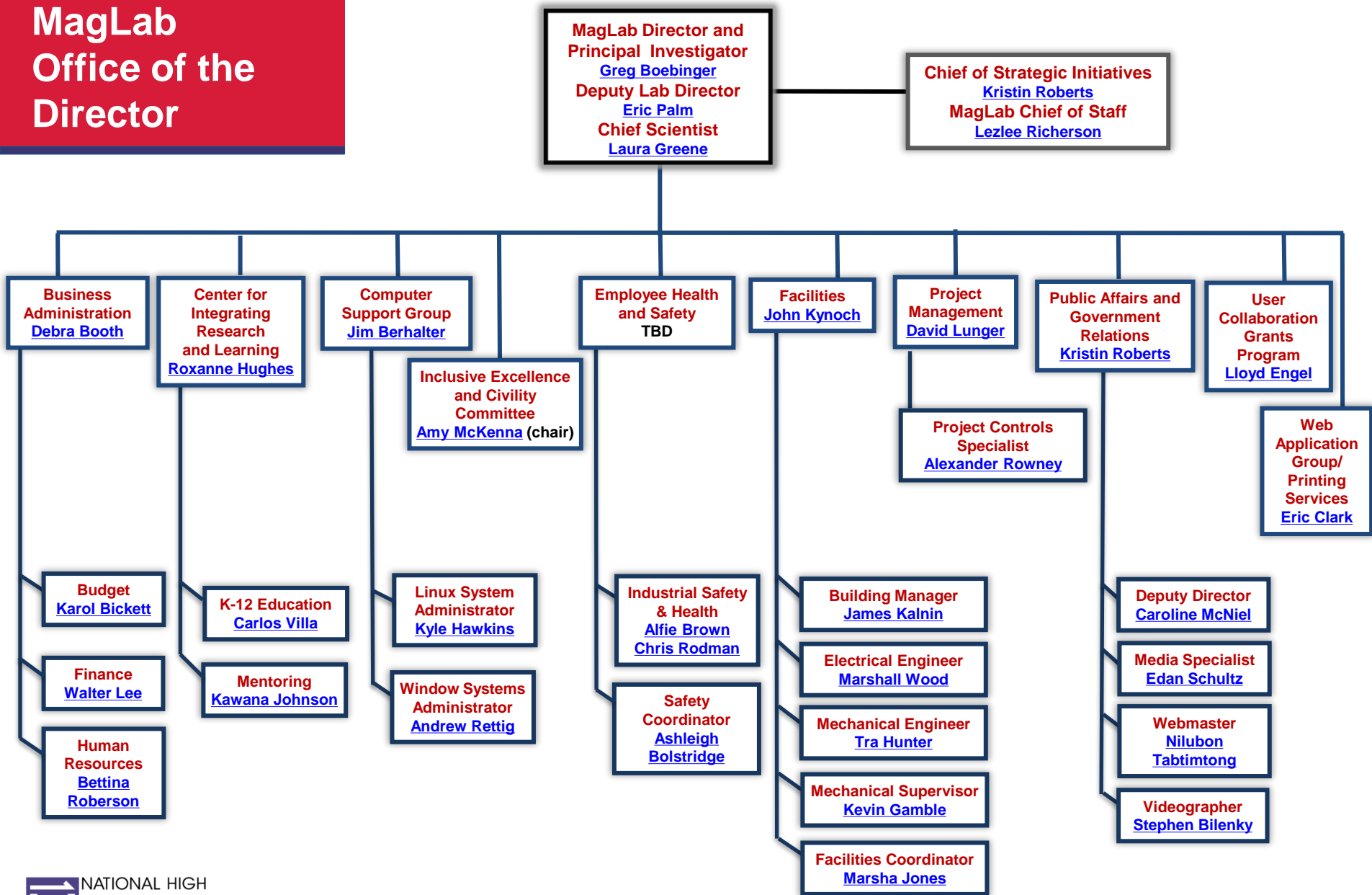
User Technical Support
[Alimamy Bangura](#)

**MagLab/ Los Alamos
Nat'l Lab Branch**
[Ross McDonald](#)
 Associate Lab Director

**MagLab/ University of
Florida Branch**
[Joanna Long](#)
 Associate Lab Director



MagLab Office of the Director



MagLab Advisory Committees

INSTITUTIONAL OVERSIGHT COMMITTEE

Richard McCullough, President, FSU, Chair
Ben Sasse, President, UF
Thom Mason, Director, LANL

Institutional Representatives

Stacey Patterson, FSU VP for Research
David Norton, UF VP for Research
Ellen Cerreta, Associate Lab Director,
Physical Science at LANL

EXTERNAL ADVISORY COMMITTEE

Stuart Brown, Chair

Franklin Leach, Chair Users Cmte., *ex officio*

Jonathan Bagger	Robert Griffin	Jeff Parrell
Christoph Boehme	Kristina Hakansson	Tatyana Polenova
Luca Bottura*	Chris Hammel	Marek Pruski
R. David Britt	Songi Han*	Bruce Strauss*
Joel Brock	Yining Huang	Alan Tennant
Wei Chen	Ni Ni	Nai-Chang Yeh
Cory Dean	Carol Nilsson	
Roger Falcone	Michael Norman	* Vice Chairs
Ian Fisher		

USERS COMMITTEE

Franklin Leach, Chair

Brad Ramshaw, Vice Chair, General Field
Galia Debelouchina, Vice Chair, Resonance

User Subcommittees

DC Magnet and High B/T Users Sub-Cmte
Pulsed Magnet Users Sub-Cmte
NMR/MRIs Users Sub-Cmte
Ion Cyclotron Resonance Users Sub-Cmte
Electron Magnetic Resonance Users Sub-Cmte

[Mark Bird](#), Chief Technology Officer

[Lucio Frydman](#), Chief Scientist for Chem/Bio

[David Larbalestier](#), Chief Materials Scientist

[Alan Marshall](#), Chief Scientist for ICR

SCIENCE COUNCIL, Chaired by [Laura Greene](#)

DIVERSITY COMMITTEE

Bi-Monthly Meeting: Chair,
Representatives from MagLab Departments

SAFETY COMMITTEE

Monthly Meeting: MagLab EH&S Director (Chair),
EH&S Staff, Director,
Representatives from MagLab Departments

MagLab Director and Principal Investigator

[Greg Boebinger](#)

Deputy Lab Director

[Eric Palm](#)

Chief Scientist

[Laura Greene](#)

EXECUTIVE COMMITTEE

Lab Director, Chair

Monthly Meeting of Director, Deputy, Associate Lab
Directors, User Facility Directors,
Chief Scientists, MagLab Chief of Staff, User Program
Chief of Staff, Directors of Budget/Admin, CIRL, Inclusive
Excellence and Civility Committee, EH and S, HR, PM,
Public Affairs, UCGP, FAIR Data

User Program
Chief of Staff
[Anke Toth](#)

Chief of Strategic Initiatives

[Kristin Roberts](#)

MagLab Chief of Staff

[Lezlee Richerson](#)

MAGLAB USER
PROGRAM

ASSOCIATE LAB
DIRECTORS

OFFICE OF THE
DIRECTOR

GREEN = External Advisory Committees

GOLD = Internal Advisory Committees