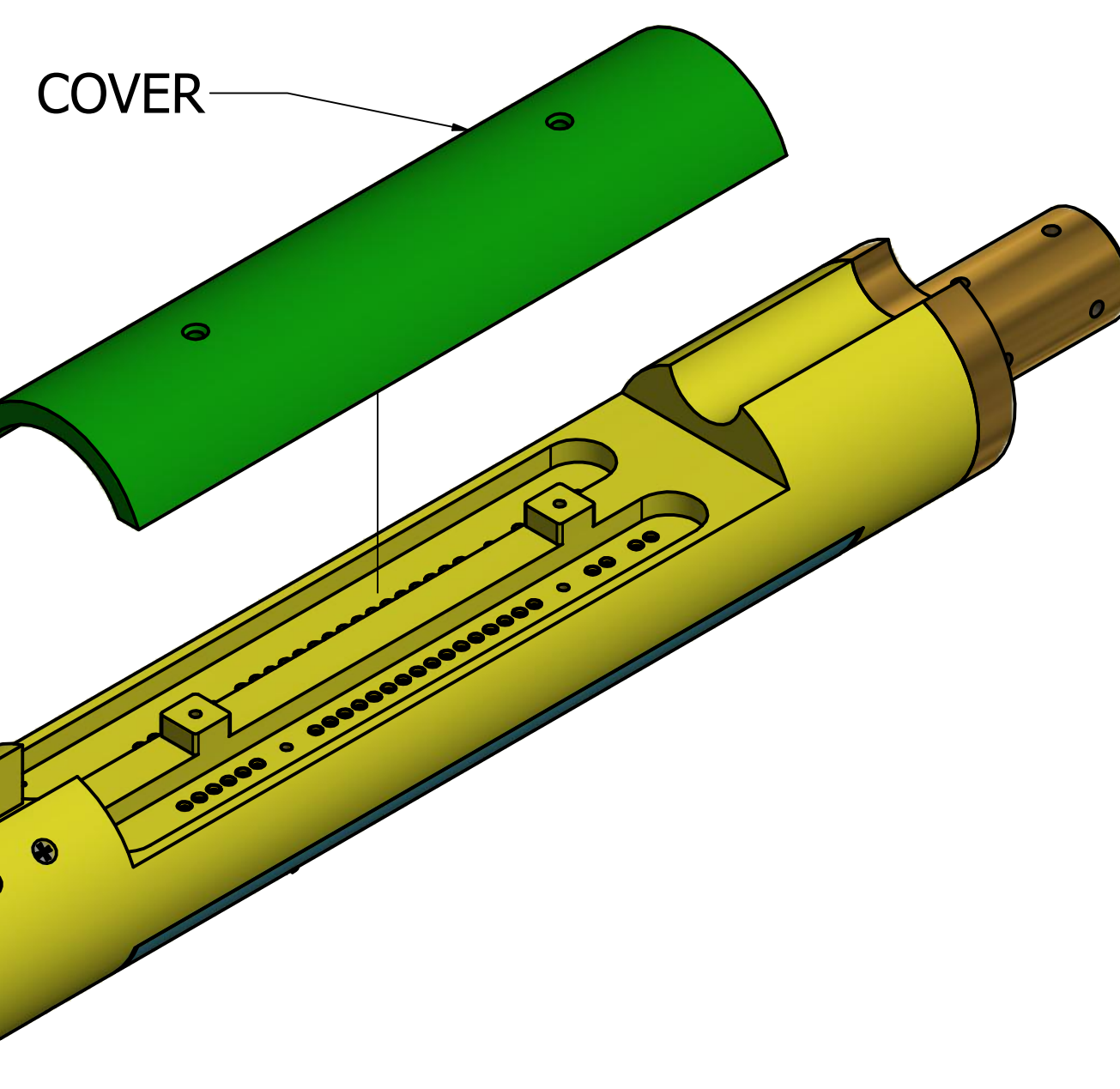


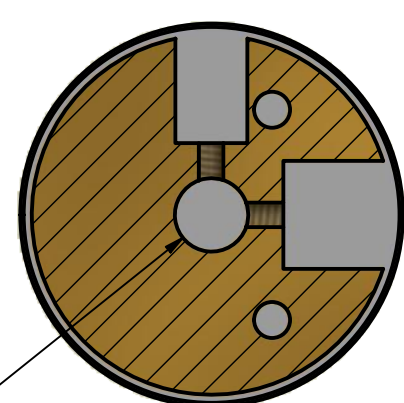
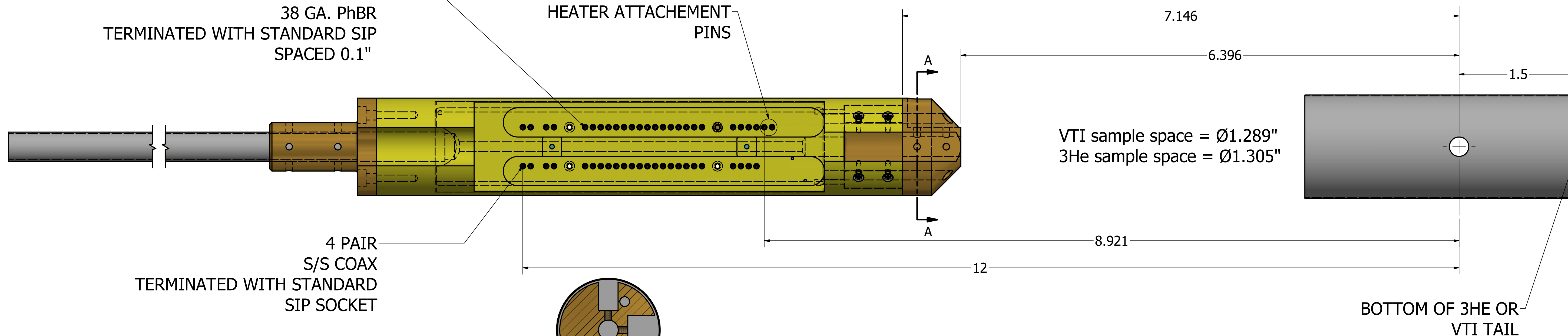
- NOTES:**
1. MATERIAL:
 2. MAXIMUM ROUGHNESS $\sqrt{32}$ UNLESS SPECIFIED.
 3. REMOVE ALL BURRS AND SHARP EDGES UNLESS SPECIFIED.

SAMPLE END OF "STUBBY" PROBE SHOWN



INSTRUMENTATION/SAMPLE CONNECTIONS:
16 PAIR TWISTED
38 GA. PhBR
TERMINATED WITH STANDARD SIP
SPACED 0.1"

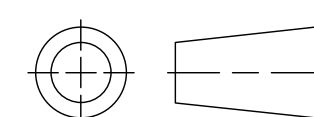
HEATER ATTACHEMENT
PINS



$\varnothing .255$ THRU
USER CAN MOUNT CUSTOM SAMPLE HOLDER USING
 $\varnothing .25$ TUBE, HELD IN PLACE WITH SET SCREWS

This drawing and the information it contains are both property of the Florida State University and are to be held by the recipient as confidential and are not to be transferred to any third party, used to make or furnish information for making any physical structure or any pictorial, graphic or verbal representation of any information contained herein or copied (unless supplied in productive form) without the express written consent of the Florida State University.

THIRD ANGLE PROJECTION



GENERAL TOLERANCES		PART MODEL FILENAME SysF_stubby.iam		NATIONAL HIGH MAGNETIC FIELD LABORATORY 1800 E PAUL DIRAC DRIVE TALLAHASSEE, FLORIDA 32310	
1 PL DEC: ± 0.020		MODELED maier	1/5/2018	DESC	
2 PL DEC: ± 0.010		DETAILED maier	1/5/2018		
3 PL DEC: ± 0.005		CHECKED			
ANGLES: $\pm 1^\circ$				SIZE D	DWG NUMBER SysF_stubby
UNLESS OTHERWISE SPECIFIED, DIMENSIONS ARE IN INCHES. DO NOT SCALE DRAWING				REV	
SHT 1 OF 1					

