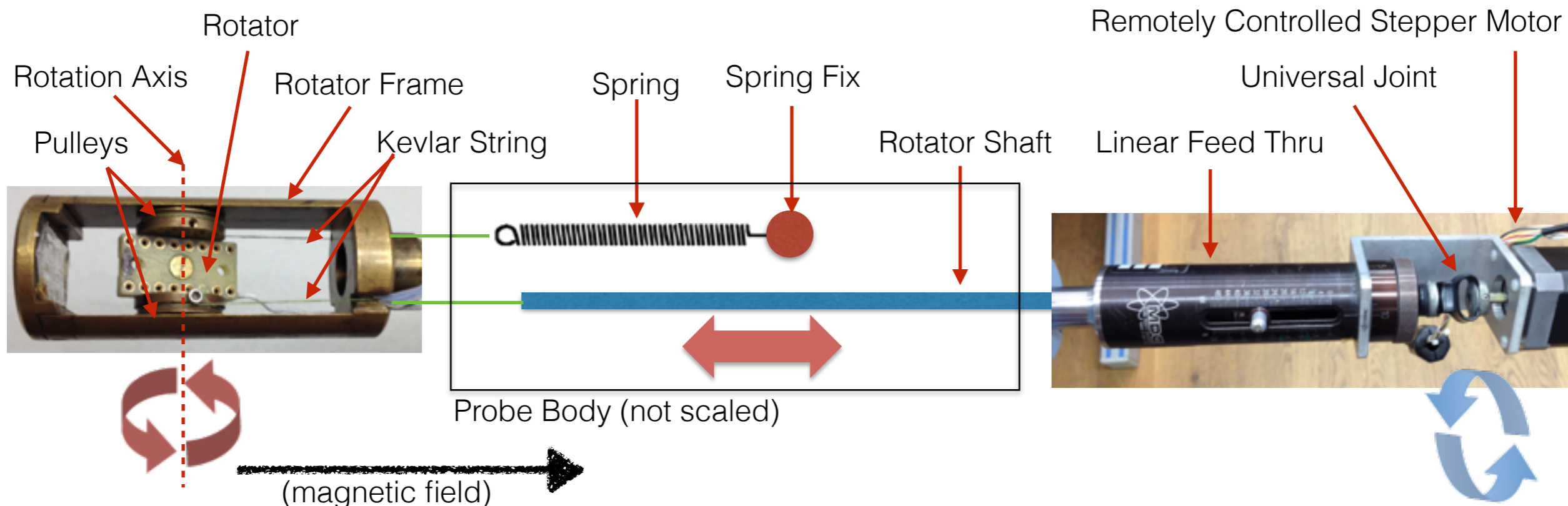
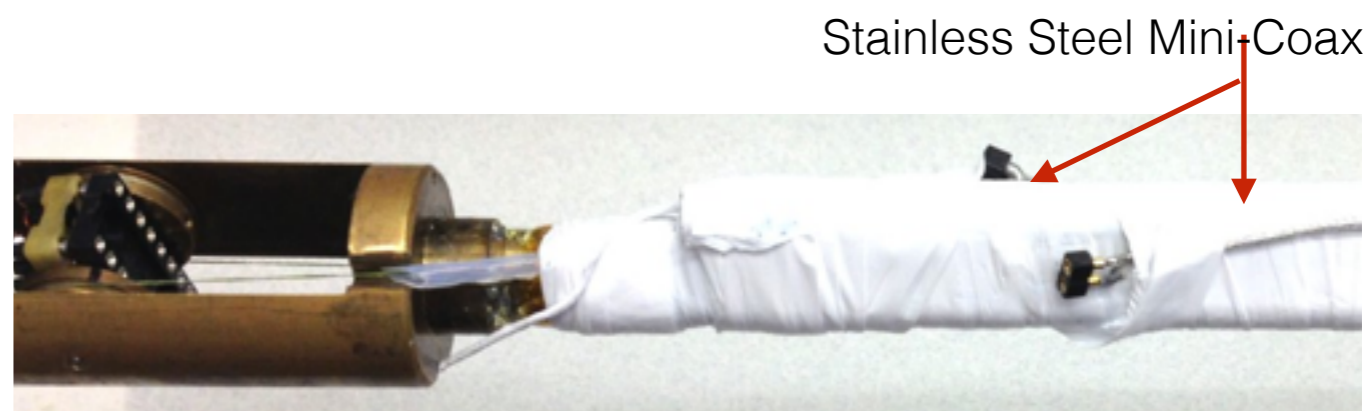
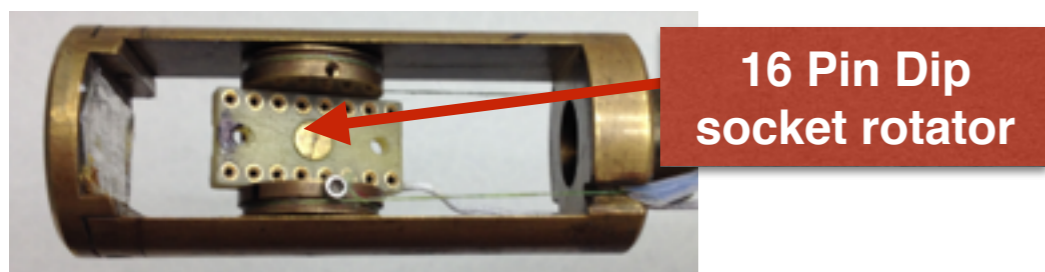


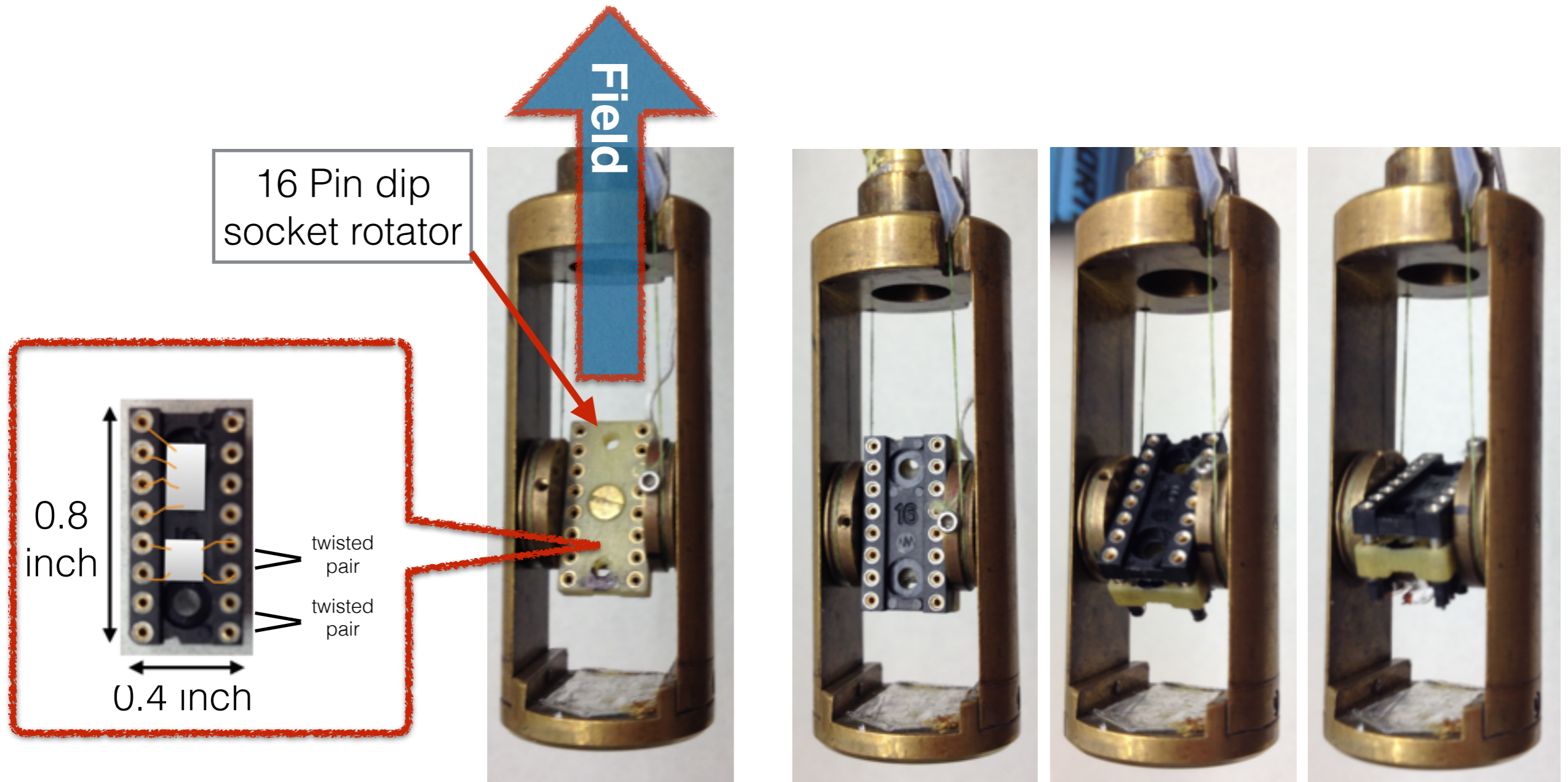
# SCM1 General Purpose Rotating Probe - 16 Pin Dip / Cylindrical Socket Mount



The general purpose rotating probe can be configured to have either a 16 pin dip header sample holder or cylindrical sample holder. The design and principle of this very low friction rotator can be found in Rev. Sci. Instrum. 70, 237 (1999).



# SCM1 General Purpose Rotating Probe - 16 Pin Dip Socket Mount

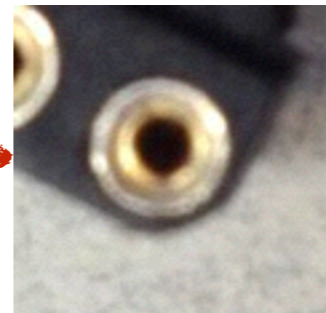
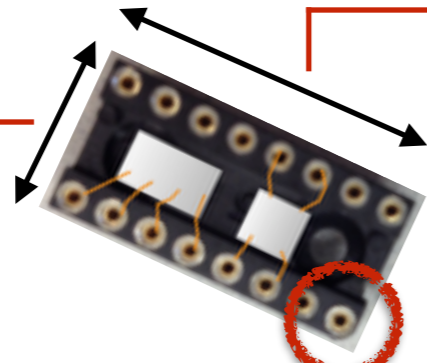


Samples prepared on a standard 16 pin dip header can be mounted to the 16 pin dip socket rotator and can be remotely rotated to a desired orientation during experiment. See page 3/4 for proper dip header dimension and shape.

## Acceptable Sample Dip Header Dimension

overall width  
0.4 inch

overall length  
0.8 inch

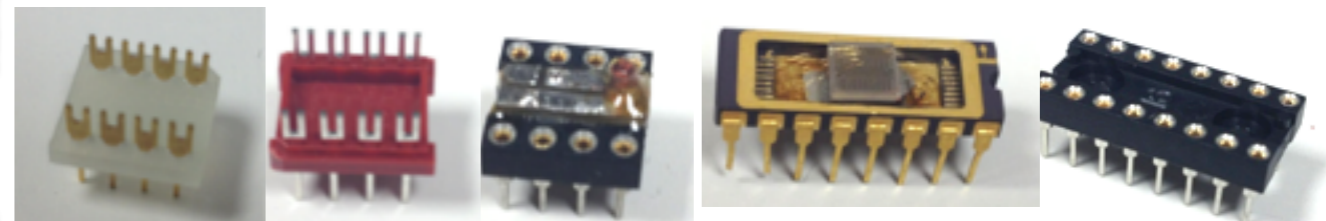
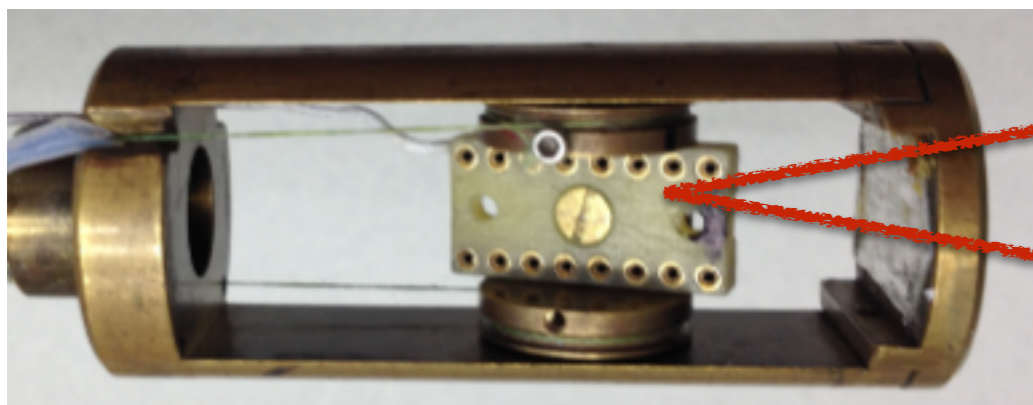
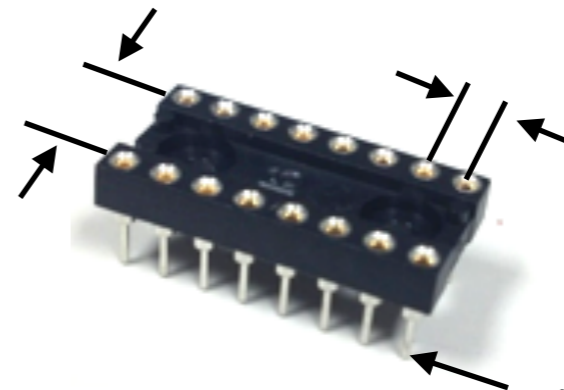


ALL corners need to be rounded off

0.3 inch between  
opposite pins

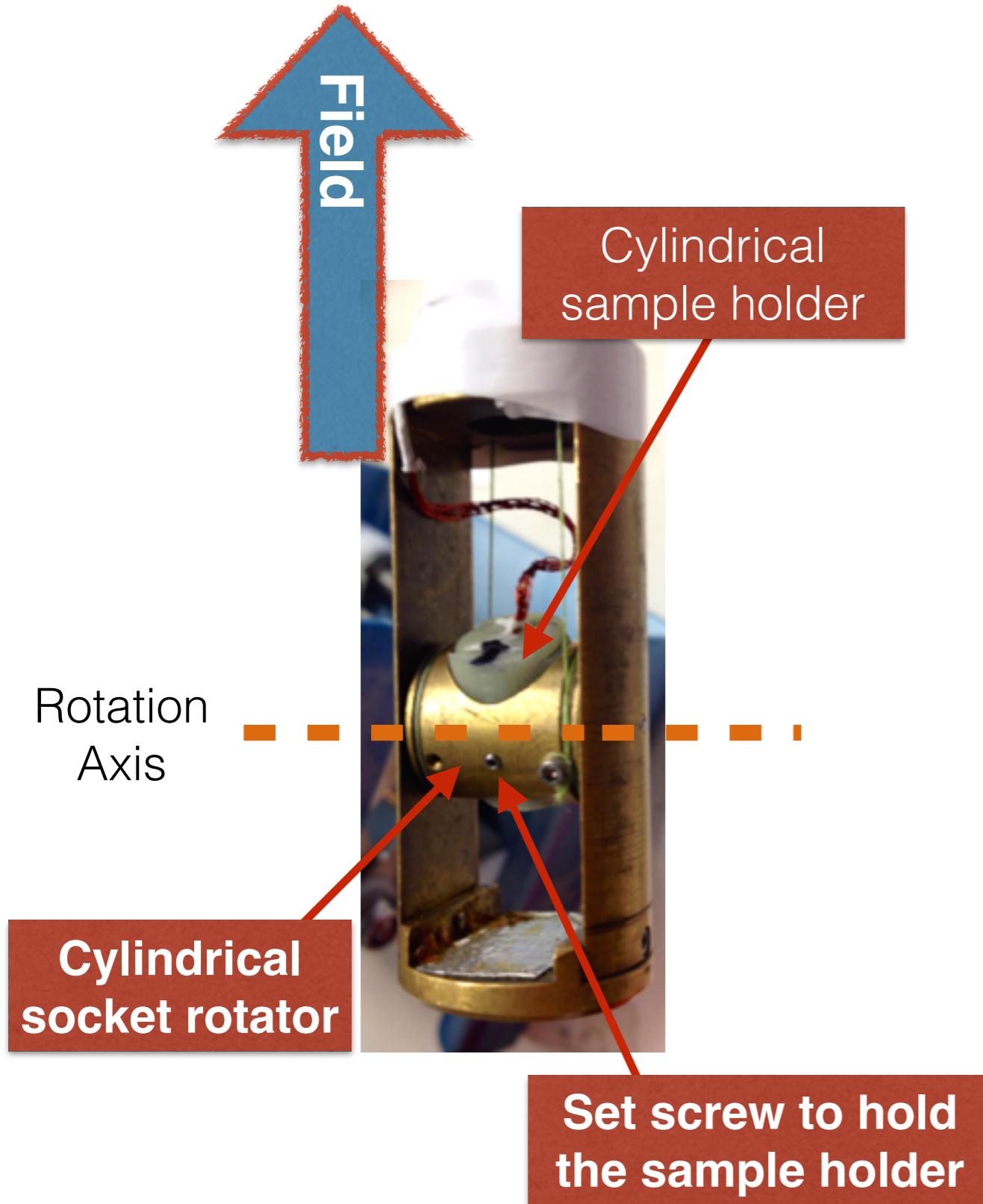
0.1 inch between  
adjacent pins

pin diameter 0.02 inch

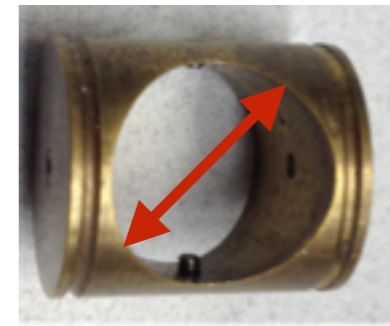


Various style of Dip header can be used as a sample holder  
**as long as** it meets the acceptable dimension above.

# SCM1 General Purpose Rotating Probe - Cylindrical Socket Mount



0.45 inch I.D.



0.5 inch I.D.

A cylindrical socket rotator is designed to hold a cylindrical sample holder that would be designed by the user. Currently the SCM1 probe has two cylindrical rotators with diameters of 0.45 inch and 0.5 inch. The dimension of a sample holder should fit 24.5 mm I.D. cylinder during rotation.