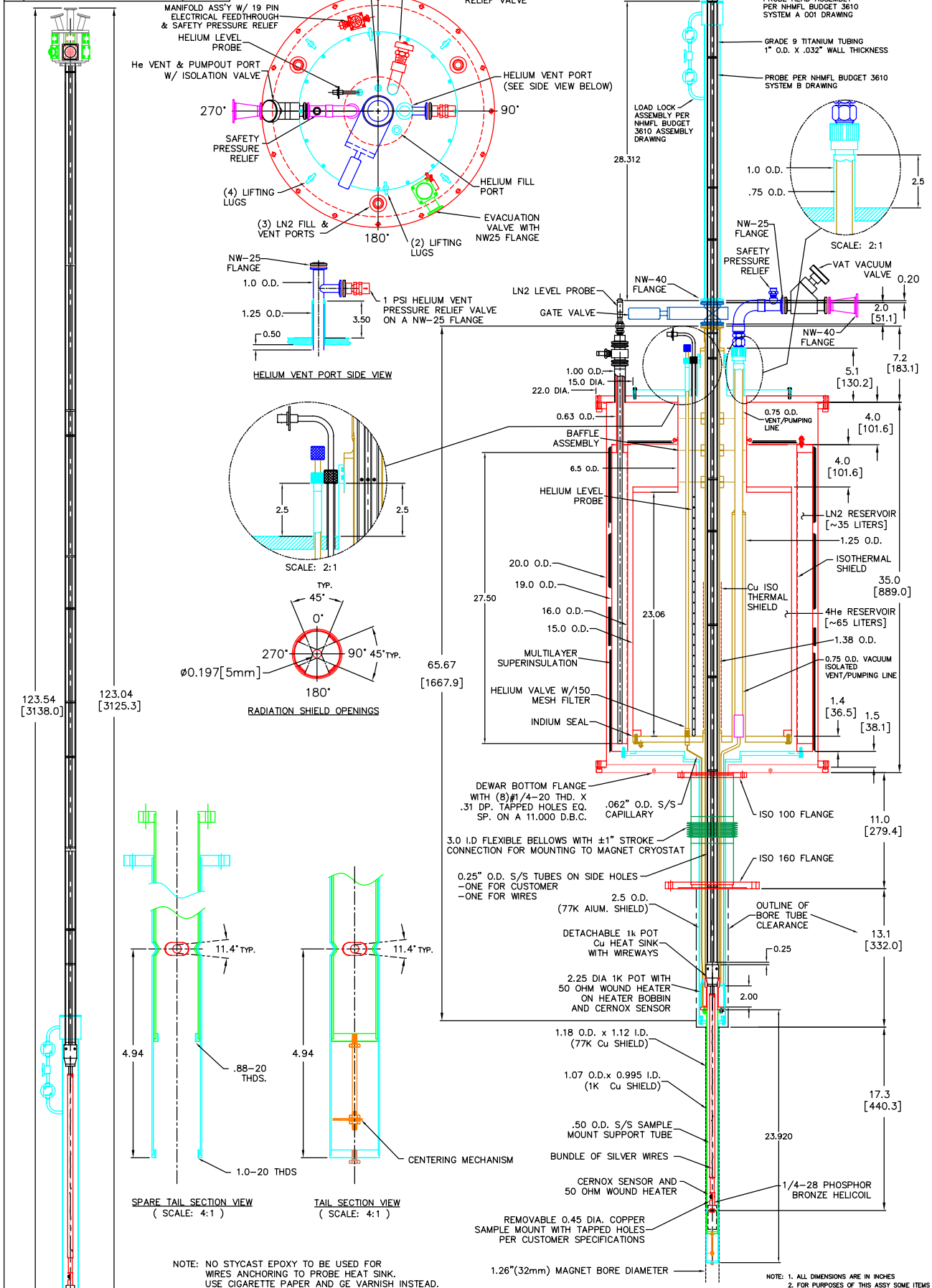


| REVISIONS | | |
|-----------|--|--------------|
| LTR | DESCRIPTION | DATE |
| F | ADDED SPARE TAILS & RELOCATION QUENCH PORT | BF, 02/02/11 |
| G | CHANGED TOP FLANGE & ROTATED 19 PIN PORT | BF, 02/08/11 |
| H | CHANGED ISO-160 FLANGE TO ISO-100 FLANGE | BF, 02/11/11 |
| I | CHANGED HEAT SINK DESIGN | BF, 03/02/11 |
| J | CHANGED TO 32 PIN FEEDTHROUGH | BF, 03/09/11 |



NOTE: NO STYCAST EPOXY TO BE USED FOR WIRES ANCHORING TO PROBE HEAT SINK. USE CIGARETTE PAPER AND GE VARNISH INSTEAD.

NOTE: 1. ALL DIMENSIONS ARE IN INCHES
2. FOR PURPOSES OF THIS ASSY SOME ITEMS MAY BE SHOWN OUT OF TRUE POSITION

| | | | | | | | |
|------------------|------|------------|----------|-----------|------|---------------------------|-------------------------|
| NHMFL, FLORIDA | | JOB# 14325 | | APPROVALS | | JANIS RESEARCH CO. | |
| DEPT. | SIG. | DATE | DEPT. | SIG. | DATE | WILMINGTON, MA. | |
| DWN BY | | L.B. | 08/18/10 | | | TITLE | |
| ENG. | | | | | | TOP LOADING He-4 CRYOSTAT | |
| Q.C. | | | | | | SIZE | REV. J |
| RELEASED TO MFG. | | | | | | D | D08-18-10A |
| BY | | | | | | P. N. | SCALE: 15/64 SHT 1 OF 1 |
| CUST. APPROVAL | | | | | | | |
| BY | | | | | | | |

CONFIDENTIAL AND PROPRIETARY
THIS DRAWING AND/OR INFORMATION CONTAINED HEREIN IS THE SOLE PROPERTY OF THE JANIS RESEARCH COMPANY AND IS NOT TO BE RELEASED OR DIVULGED TO THIRD PARTIES WITHOUT THE EXPRESSED, WRITTEN CONSENT OF THE JANIS RESEARCH COMPANY, INC.