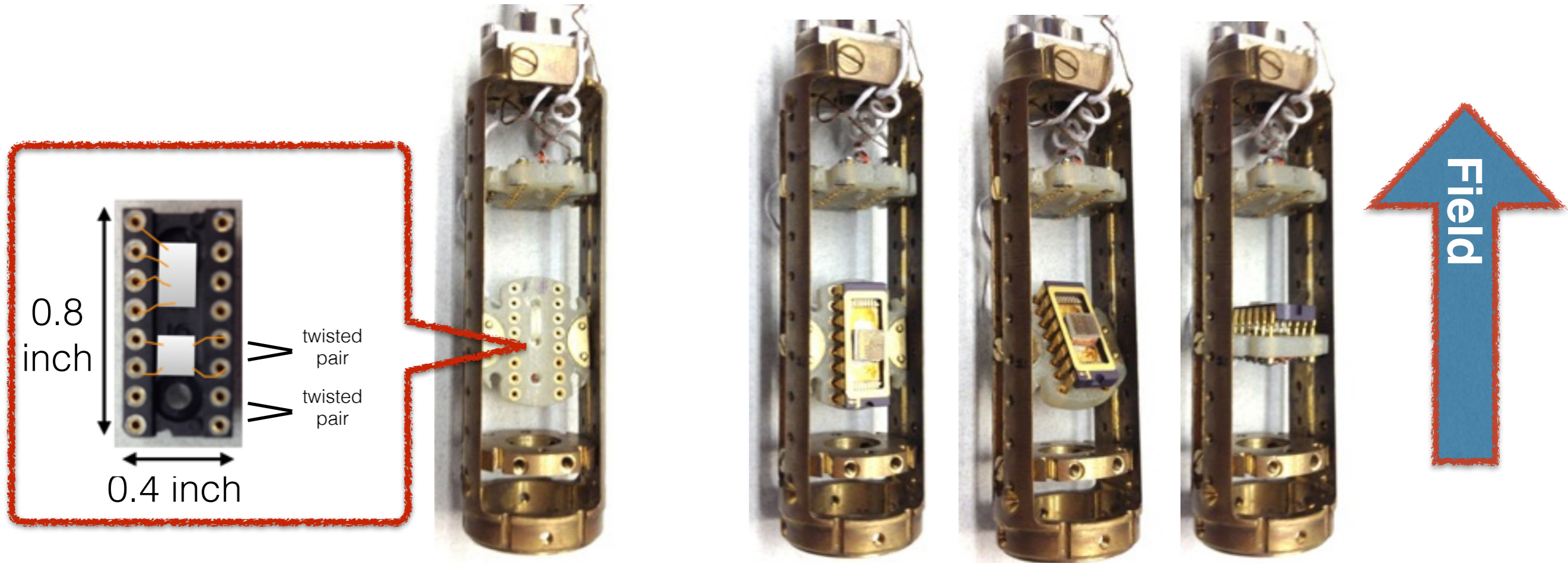


## SCM1 General Purpose Straight Probe - 16 Pin Dip Socket Mount



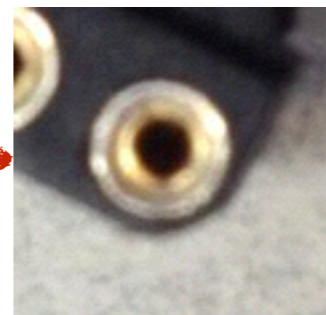
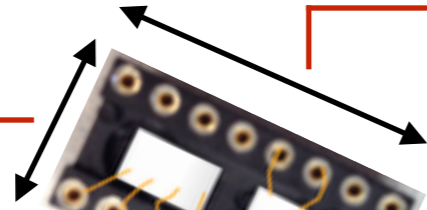
Sample prepared on a standard 16 pin dip header can be mounted to a general purpose straight (non-rotating) probe and can be configured to a desired orientation before probe loading, see page 2/2 for proper dip header dimension and shape. Two mini coax cables are also available for the straight probe. For more information including **non-standard sized sample holder** mounting please contact Ju-Hyun Park ([jhpark@magnet.fsu.edu](mailto:jhpark@magnet.fsu.edu))

# SCM1 General Purpose Straight Probe - Sample Dip Header Dimension

## Acceptable Sample Dip Header Dimension

overall width  
0.4 inch

overall length  
0.8 inch

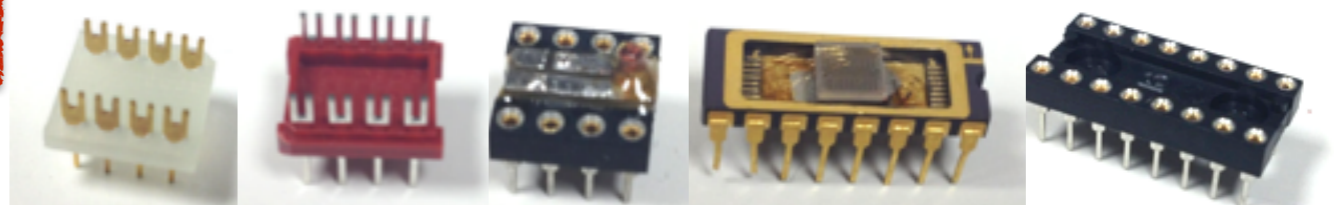
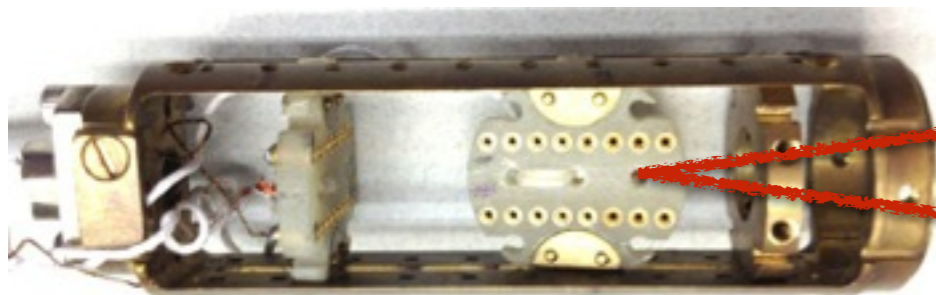
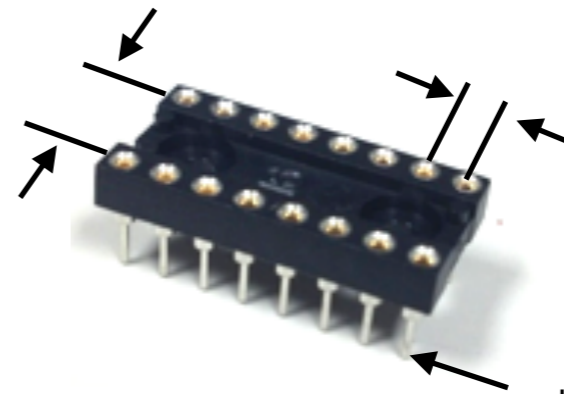


ALL corners need to be rounded off

0.3 inch between  
opposite pins

0.1 inch between  
adjacent pins

pin diameter 0.02 inch



Various style of Dip header can be used as a sample holder  
**as long as** it meets the acceptable dimension above.